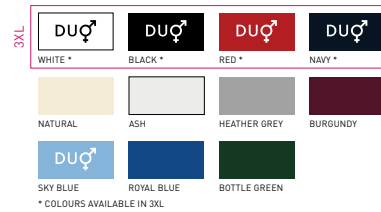


# B&C HEAVYMILL - PU 422



## REGULAR FIT

- Short-sleeved Fine Piqué polo shirt
- 1x1 rib knitted collar and cuffs
- Side vents
- 3-button placket reinforced with fusible interlining
- Matching colour buttons
- Necktape
- Side seams



100% pre-shrunk ring-spun **combed** cotton  
ASH: 99% PRE-SHRUNK RING-SPUN COMBED COTTON - 1% VISCOSE  
 HEATHER GREY: 90% PRE-SHRUNK RING-SPUN COMBED COTTON - 10% VISCOSE

Fine Piqué

230 g/m<sup>2</sup>

S - M - L - XL - 2XL - 3XL\*

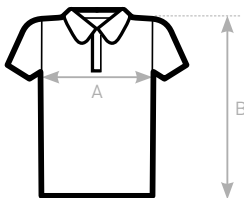
10 pcs/pack & 50 pcs/carton

\* ONLY AVAILABLE IN WHITE, BLACK, NAVY AND RED



**DU♂**  
**C♂NCEPT**

with B&C Heavymill /w.



## SIZES [CM]

B&C HEAVYMILL PU 422	XS	S	M	L	XL	2XL	3XL
A HALF CHEST	-	50	53,5	57	60,5	64	67,5
B BODY LENGTH FROM NECK POINT	-	70,5	73	75,5	78	80,5	83

**OEKO-TEX®**  
 CONFIDENCE IN TEXTILES  
**STANDARD 100**  
1501003 ControlUnit  
 Tested for harmful substances.  
 www.oeko-tex.com/standard100